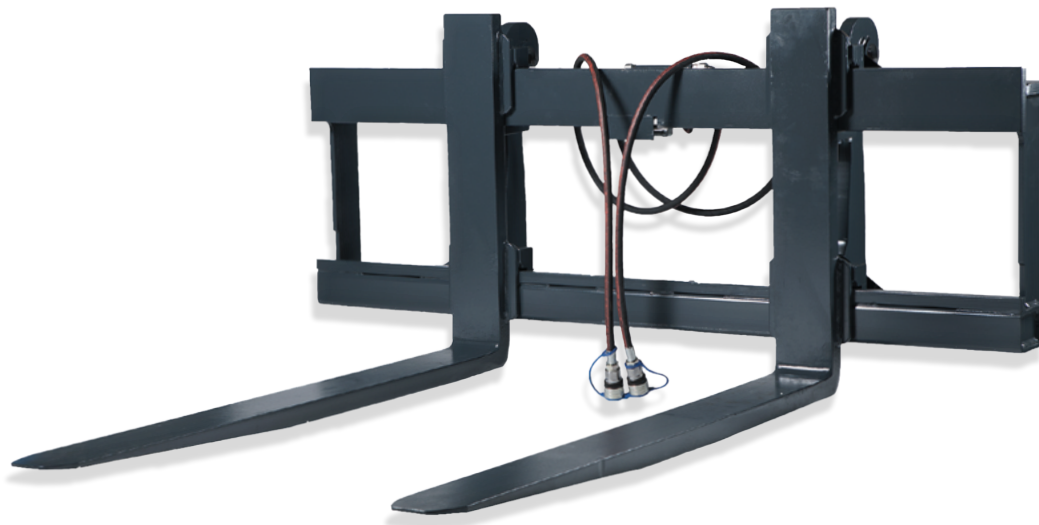


HYDRAULIC PALLET FORKS

Capacity: 5 000 – 9 900 kg

Width: 1 600 – 2 000 mm



OPERATIONAL SAFETY WITH MAXIMUM VISIBILITY

FEATURES

- Robust construction
- Suitable in very dirty environments
- Protected hosing
- Maximum visibility
- All machine mounts

The G-series is a truly tenacious laborer, built for demanding environments where high demands are placed on operational safety. The visibility for the operator is one of the best available on the market, which makes work safe and secure. The hoses and hydraulic cylinders are protected behind the upper beam. As a standard the fork positioner is supplied with two connection hoses for fork positioning.

OPTIONS

The positioner can be upgraded to also handle side shifting, either via solenoid valve (two hoses) or with four hoses.

To increase performance, it is possible to equip the forks with upper and lower rollers, which improves the fork positioning and sideshifting functions for heavy loads.

It is also possible to choose forks with other dimensions, but also other functions such as fully tapered forks, "cranked" forks, folding forks and forks with different coatings.

MACHINES



Wheel loader



Telescopic handler

APPLICATIONS



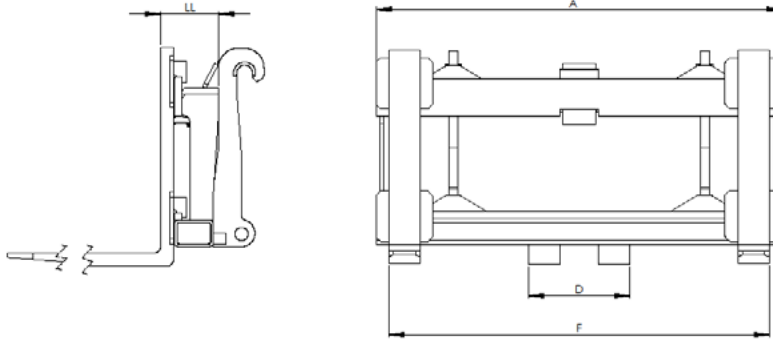
Heavy loads



Dirty environments

HYDRAULIC PALLET FORKS

Capacity: 5 000 – 9 900 kg
Width: 1 600 – 2 000 mm

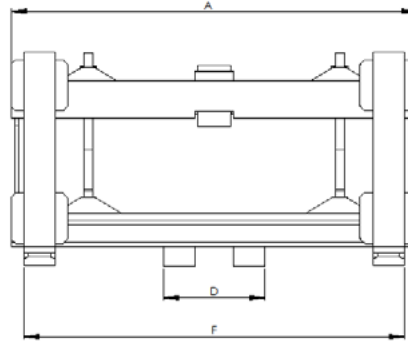
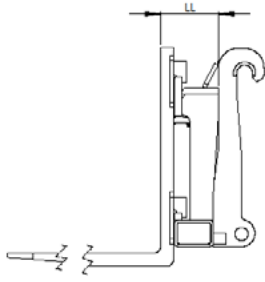


Model type	Capacity / Load centre	Width	Forks	Opening range	Weight	LL	Special or Bracket
G4-50							
G4-50/1600		1600	125x50x1200	400-1500	490	223	
G4-50/1600	5000kg/LC600	1600	125x50x1500	400-1500	520		
G4-50/2000	5700kg/LC500	2000	125x50x1200	400-1900	530		
G4-50/2000		2000	125x50x1500	400-1900	560		
G4-62							
G4-62/1600		1600	150x50x1200	425-1525	520	223	
G4-62/1600		1600	150x50x1400	425-1525	543		
G4-62/1600	6200kg/LC600	1600	150x50x1600	425-1525	566		
G4-62/2000	6900kg/LC500	2000	150x50x1200	425-1925	560		
G4-62/2000		2000	150x50x1400	425-1925	583		
G4-62/2000		2000	150x50x1600	425-1925	606		
G4-90							
G4-90/1600		1600	150x60x1200	425-1525	560	233	
G4-90/1600		1600	150x60x1450	425-1525	595		
G4-90/1600	9000kg/LC600	1600	150x60x1600	425-1525	616		
G4-90/2000		2000	150x60x1200	425-1925	600		
G4-90/2000	9900kg/LC500	2000	150x60x1450	425-1925	635		
G4-90/2000		2000	150x60x1600	425-1925	656		
G4-90/2000C*		2000	150x60x1600	550-2050	656		

*"Container forks" with larger max opening (1750 mm between forks for lifting of containers)

HYDRAULIC PALLET FORKS

Capacity: 5 000 – 9 900 kg
Width: 1 600 – 2 000 mm



Model type	Capacity / Load centre	Width	Forks	Opening range	Weight	LL	Special or Bracket
G4-100							
G4-100/2000	10000/600 12000/500	2000	150x70x1600				
G4-100/2000		2000	150x70x1600				L150 Hooks
G4-100/2000		2000	150x70x2000				
G4-100/2000		2000	150x70x2000				L150 Hooks
G4-100/2200		2400	150x70x1600				
G4-100/2400		2400	150x70x1600				L150 Hooks
G4-100/2400		2400	150x70x2000				
G4-100/2400		2400	150x70x2000				L150 Hooks
G4-140							
G4-140/2000	14000/600	2000	180x70x2000				
G4-140/2000		2000	180x70x2400				
G4-140/2400		2400	180x70x2000				
G4-140/2400		2400	180x70x2400				
G4-180							
G4-180/2000	18000/600	2000	180x80x2000				
G4-180/2000		2000	180x80x2400				
G4-180/2400		2400	180x80x2000				
G4-180/2400		2400	180x80x2400				
G4-250							
G4-160/2400	25000/600	2400	250x80x2400				

NOTE

Per standard supplied with 2 connecting hoses for fork positioning.

OPTIONS

The positioners are delivered as standard with the Large BM bracket. For other mounts and quick mounts, contact us for pricing.

- Forks in other lengths
- Forks with rollers
- Sideshifting over solenoid valve (two hoses)

